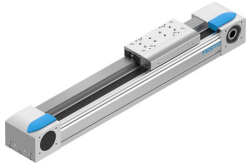


Belt driven linear actuator EGC-120-400-TB-KF-0H-GK

Part number: 3013364

FESTO



Data sheet

Feature	Value
Drive pinion effective diameter	39.79 mm
Working stroke	400 mm
Size	120
Stroke reserve	0 mm
Toothed belt elongation	0.13 %
Toothed belt pitch	5 mm
Type code	EGC
Mounting position	Any
Guide	Recirculating ball bearing guide
Structural design	Electromechanical linear axis with toothed belt
Motor type	Stepper motor Servo motor
Symbol	00991212
Max. acceleration	50 m/s ²
Max. speed	5 m/s
Repetition accuracy	±0.08 mm
Duty cycle	100%
Degree of protection	IP40
Ambient temperature	-10 °C ... 60 °C
2nd moment of area Ix	4620000 mm ⁴
2nd moment of area Iy	5650000 mm ⁴
Max. force Fy	6890 N
Max. force Fz	6890 N
Max. no-load resistance to shifting	70 N
Max. torque Mx	144 Nm
Max. feed force Fx	800 N
Torsion moment of inertia It	2680000 mm ⁴
Mass moment of inertia JH per meter of stroke	0.93 kgcm ²
Mass moment of inertia JL per kg of payload	3.96 kgcm ²
Feed constant	125 mm/U
Material of end caps	Wrought aluminum alloy Anodized
Profile material	Wrought aluminum alloy Anodized
Note on materials	Contains paint-wetting impairment substances RoHS-compliant

Feature	Value
Drive cover material	Wrought aluminum alloy Anodized
Slide carriage material	Steel
Guide rail material	Steel
Belt pulley material	High-alloy stainless steel
Slide material	Wrought aluminum alloy Anodized
Toothed belt clamping component material	Cast stainless steel
Toothed belt material	Polychloroprene with glass cord and nylon coating